

SHARPX DUAL 2300 + EDGE FIX PATENT

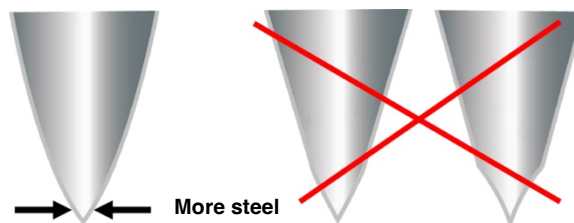
Safe, Clean, Quick and Easy in a Professional Way.



- SHARPX Dual Knife Sharpener with **Diamond sharpening wheels in step 1 and 2.**
- EDGE FIX Hand tool for manual polishing with **Ceramic pins in step 3.**
- New generation for safe, clean and quick sharpening / polishing.

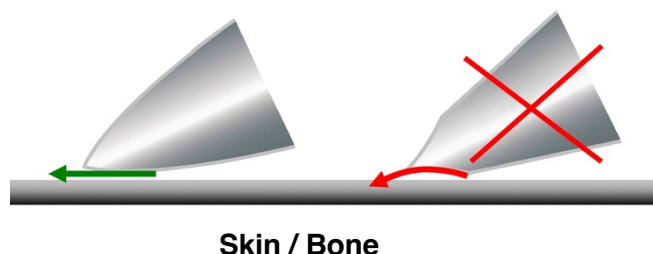
Sharpening is one of mans oldest skills and has laid the foundation for the development and survival of mankind. From the stone age flint axes to today's knives made of stainless steel which can be sharpened to a **convex form** and to a **correct angle**.

Convex sharpening Conventional sharpening

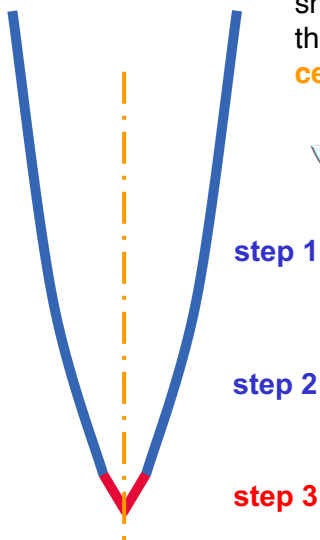


KNIFE SHARPENING TECHNIQUE

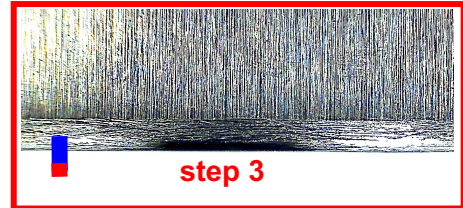
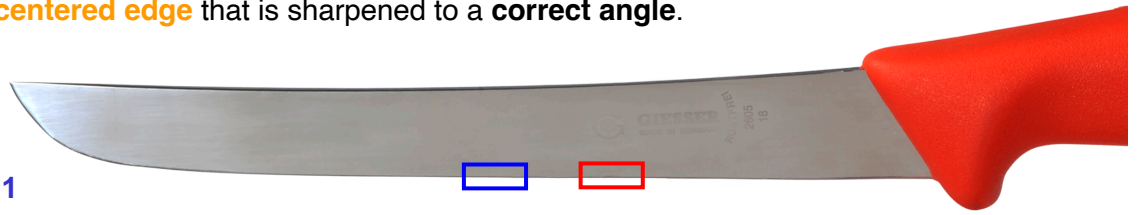
When the knife is sharpened into a **convex shape**, the edge will be stronger and last longer since it contains **more steel**. Another result of the convex shape is that the knife will work more flexibly against the cutting base, for example hide or bone, reducing the risk of the knife being worn out too quickly.



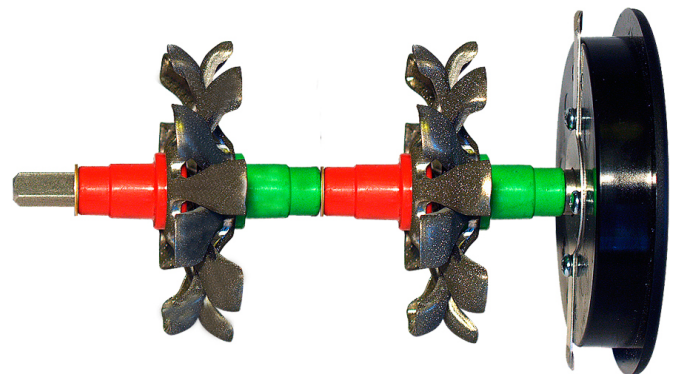
Convex form



When you sharpen with the SHARPX Dual sharpener equipped with one coarse sharpening station (**step 1**) and one fine sharpening station (**step 2**) you should finish the process by polishing in the EDGE FIX (**step 3**). The result is an ultimately convex, **centered edge** that is sharpened to a **correct angle**.



Correct angle



Grinding
Diamond wheel
Fine

Grinding
Diamond wheel
Coarse

Technical Information SHARPX Dual 2300

Weight: 6,2 kg
Width: 180 mm
Height: 190 mm
Length: 315 mm

Diamond grinding wheel Coarse step 1:
Ø 70 mm Angle 35° Diamond 54µ

Diamond grinding wheel Fine step 2:
Ø 70 mm Angle 35° Diamond 36µ
Grinding speed: 2100 rpm
Effect: 25 W
Connectivity: 230 V, 50 Hz
Insulation: IP55
Subject to alteration

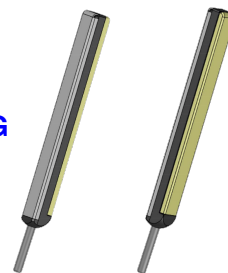
Technical Information SHARPX EDGE FIX



Weight: 800 g
Diameter: 144 mm
Height: 47 mm

DIAMOND GRINDING

CERAMIC POLISHING



Sharpening angle: **Diamond 15°- 20°**

Polishing angle: **Ceramic 18°- 23°**

Total effective diamond rods surface: 1444 mm² (722 mm² x 2)

Total effective ceramic rods surface: 1444 mm² (722 mm² x 2)

More info

<https://www.youtube.com/watch?v=mu8zsoeTUvY>
www.sharpx.se



SHARPX